

# PBA Cheetah 33



Oil Pattern Distance:	33 Feet	Reverse Brush Drop:	28 Feet	Oil Per Board:	50 uL
Forward Oil Total:	17.55 mL	Reverse Oil Total:	7.85 mL	Volume Oil Total:	25.4 mL
Forward Boards Crossed:	351 Boards	Reverse Boards Crossed:	157 Boards	Total Boards Crossed:	508 Boards

	Start	Stop	Loads	Speed	Crossed	Start	End	Feet	T.Oil
1	3L	3R	3	14	105	0.0	3.9	3.9	5250
2	4L	4R	1	18	33	3.9	6.4	2.5	1650
3	5L	5R	6	18	186	6.4	21.7	15.3	9300
4	8L	6R	1	22	27	21.7	24.8	3.1	1350
5	2L	2R	0	22	0	24.8	33.0	8.2	0

Conditioner:  
Type In or Select  
One

TransferType:  
Type In or Select  
One

Forward



Reverse



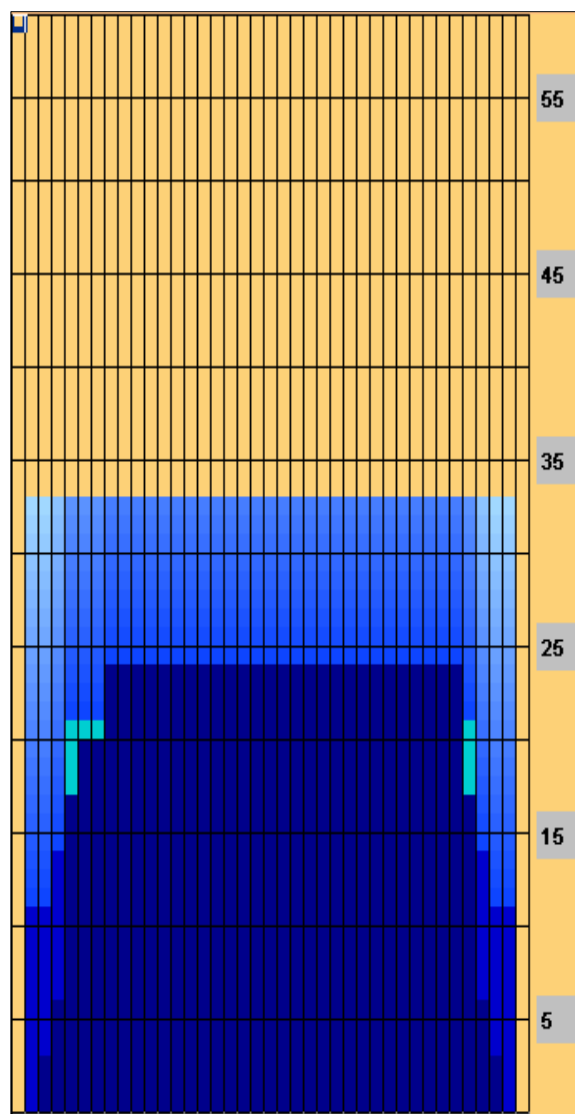
Combined



Buff



	Start	Stop	Loads	Speed	Crossed	Start	End	Feet	T.Oil
1	2L	2R	0	26	0	33.0	24.0	-9.0	0
2	8L	6R	1	26	27	24.0	20.4	-3.6	1350
3	6L	6R	1	26	29	20.4	16.8	-3.6	1450
4	5L	5R	1	22	31	16.8	13.7	-3.1	1550
5	4L	4R	1	18	33	13.7	11.2	-2.5	1650
6	2L	2R	1	14	37	11.2	9.3	-1.9	1850
7	2L	2R	0	14	0	9.3	0.0	-9.3	0



Item	3L-7L:18L-18R	8L-12L:18L-18R	13L-17L:18L-18R	18L-18R:17R-13R	18L-18R:12R-8R	18L-18R:7R-3R
Description	Outside Track:Middle	Middle Track:Middle	Inside Track:Middle	Middle: Inside Track	Middle:Middle Track	Middle:Outside Track
Track Zone Ratio	1.57	1	1	1	1	1.45

