

WSOB VIPER



Oil Pattern Distance:	39 Feet	Reverse Brush Drop:	39 Feet	Oil Per Board:	50 uL
Forward Oil Total:	15.9 mL	Reverse Oil Total:	17.5 mL	Volume Oil Total:	33.4 mL
Forward Boards Crossed:	318 Boards	Reverse Boards Crossed:	350 Boards	Total Boards Crossed:	668 Boards

	Start	Stop	Loads	Speed	Crossed	Start	End	Feet	T.Oil
1	2L	2R	6	18	222	0.0	12.7	12.7	11100
2	7L	7R	1	18	27	12.7	15.2	2.5	1350
3	9L	9R	3	18	69	15.2	22.8	7.6	3450
4	2L	2R	0	22	0	22.8	39.0	16.2	0

Conditioner:
Type In or Select One

TransferType:
Type In or Select One

Forward
Reverse
More

	Start	Stop	Loads	Speed	Crossed	Start	End	Feet	T.Oil
1	2L	2R	0	30	0	39.0	29.0	-10.0	0
2	9L	9R	3	14	69	29.0	23.1	-5.9	3450
3	8L	8R	2	14	50	23.1	19.2	-3.9	2500
4	6L	6R	2	14	58	19.2	15.3	-3.9	2900
5	5L	5R	2	14	62	15.3	11.4	-3.9	3100
6	2L	2R	3	10	111	11.4	7.2	-4.2	5550
7	2L	2R	0	10	0	7.2	0.0	-7.2	0

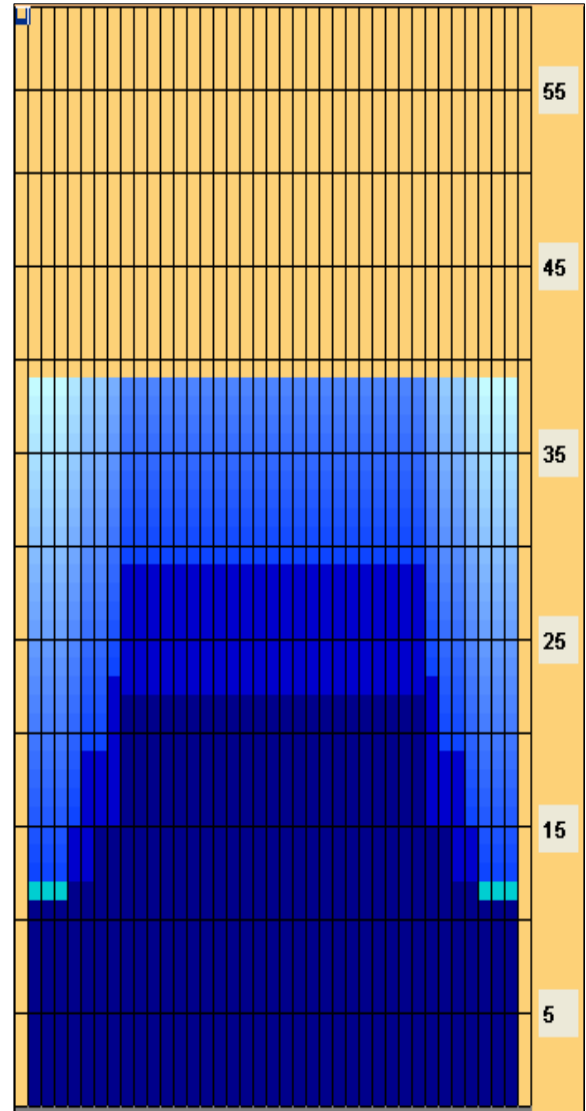
Forward
Reverse
More

Forward

Reverse

Combined

Buff



Item	3L-7L:18L-18R	8L-12L:18L-18R	13L-17L:18L-18R	18L-18R:17R-13R	18L-18R:12R-8R	18L-18R:7R-3R
Description	Outside Track:Middle	Middle Track:Middle	Inside Track:Middle	Middle: Inside Track	Middle:Middle Track	Middle:Outside Track
Track Zone Ratio	1.96	1.06	1	1	1.06	1.96

